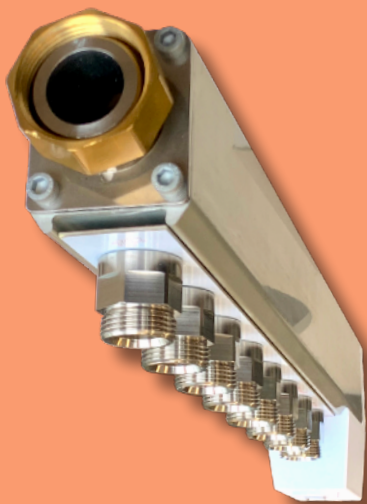


TempGate



Application

TempGate controls the temperature of up to 12 heating/cooling circuits. It is compatible with existing distribution boxes. TempGate is based on a sophisticated patent that allows independent and continuous control of up to 12 flows with only one drive block. TempGate has an integrated temperature and flow measurement for each channel.

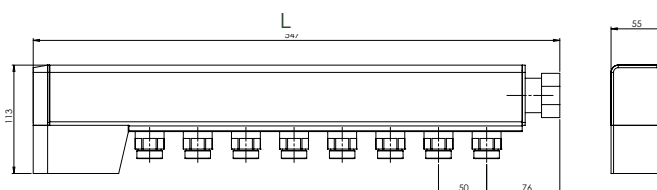
With the integrated software an automatic commissioning with hydraulic balancing is carried out.

In combination with AirGate, an extremely comfortable and efficient room climate is created. TempGate can be used in combination with or without a RoomMaster.

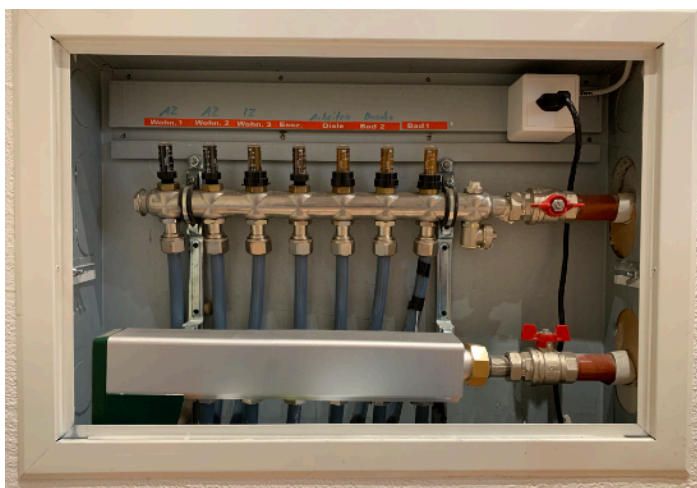
Specifications

Measured value	Range	Accuracy
Temperature	0 ..70°C	±0.5 °C
Volume flow	0..140 L/h pro Abgang	±10%
Aperture	ø 0..10 mm	±0.2 mm
Power supply	24V	
Communication	SAGB*	

*Simply AirGate Bus



TG.-04	L = 347 mm
TG.-05	L = 447 mm
TG.-06	L = 447 mm
TG.-07	L = 547 mm
TG.-08	L = 547 mm
TG.-10	L = 647 mm
TG.-12	L = 747 mm



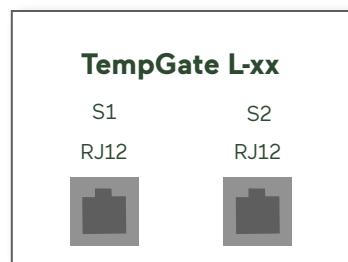
Installation

TempGate is connected to the distributor box of the floor heating system. It is compatible with the common installation dimensions. 4..12 independent heating/cooling circuits are possible. With the integrated commissioning routine, commissioning is very easy. Each individual circuit is measured and configured accordingly. The integrated AI control algorithm automatically optimizes all control parameters.

Connection of TempGate Light

The TempGate Light is connected to the FlatMaster via one of the two SAG Bus connections (RJ12).

In addition, a further SAG Bus connection is available for following TempGate.

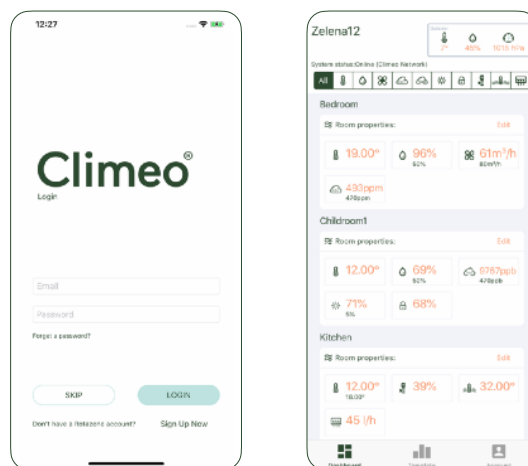


Commissioning

The TempGate is activated with the Climeo App*. This happens almost completely automatically.

If you want to enable the IoT-capable control (storing data in the cloud), you need a WiFi router with Internet access (must be configured) or a LoRa module.

Using the app is very easy. The app is free of charge and updates itself automatically.



Programming

TempGate can already communicate with a number of devices. Further interfaces to the central heating system or to higher-level control systems will follow.